

A festive living room with a Christmas tree, a large patterned pendant light, and a fireplace.

ENJOY CHRISTMAS ROUND



www.viewhotelfolkestone.co.uk | 01303 252 102 | sales@thevhf.co.uk



FESTIVE SEASON

ENJOY CHRISTMAS ROUND OURS

This Christmas, come join us for holiday fun! Enjoy our festive atmosphere and high quality cuisine as we celebrate the most wonderful time of the year! We have everything you need to make this holiday special. From relaxing gatherings with friends and family to corporate events, we guarantee an outstanding experience that you won't forget. From Festive Menus to Festive Party Nights, let's make this Christmas celebration unforgettable, book your Festive Feast, Festive Party Night or Festive Break now!

For further information and bookings please contact us:
01303 252 102
info@thevhf.co.uk

FESTIVE FEASTS

STARTERS

Jerusalem Artichoke Soup
VG, DF, GF

Smoked Duck Breast Salad, with Orange & Toasted Walnuts
DF, GF

Classic Prawn Cocktail, with Mary Rose Sauce
DF, GF option available

Warm Goats Cheese, set on a bed of Beetroot Salad, finished with a Raspberry Vinaigrette
V, GF

MAINS

Traditional Roasted Kentish Turkey, served with Roast Potatoes, "Pigs in Blankets," stuffing & Seasonal Vegetables

Baked Fillet of Hake, Buttered Potato's, Tenderstem Broccoli, Tomato, Lemon and Basil Sauce
GF

Slow Braised Haunch of Venison, in a Rich Port Juice, Served with Mash Potato & Tenderstem Broccoli

Wild Mushroom Risotto, topped with Rocket & Parmesan
V, GF, VG option available

DESSERT

Mango Cheesecake served with Mango Sorbet
V

Traditional Christmas Pudding, served with Brandy Custard
V

Mix Selections of Ice-cream & Sorbets Vanilla, Strawberry, Chocolate, Mango & Lemon

**£38
PER
PERSON**

**WELCOME
DRINK
INCLUDED**

**AVAILABLE
FOR LUNCH
& DINNER
SERVICE**

**Sunday, Dinner Service
Monday - Thursday, lunch
& dinner service
Friday & Saturday Lunch
service only**



FESTIVE PARTY NIGHTS

— £44 PER PERSON —

3-COURSES • DRINKS • EVENING DISCO • FUN

OUR FESTIVE PARTIES PACKAGE IS AVAILABLE EVERY FRIDAY AND SATURDAY
FOR A MINIMUM OF 6 PEOPLE OR MORE

EARLY BIRD OFFER - BOOK BEFORE 31 AUGUST AND THE ORGANISER GOES FREE!

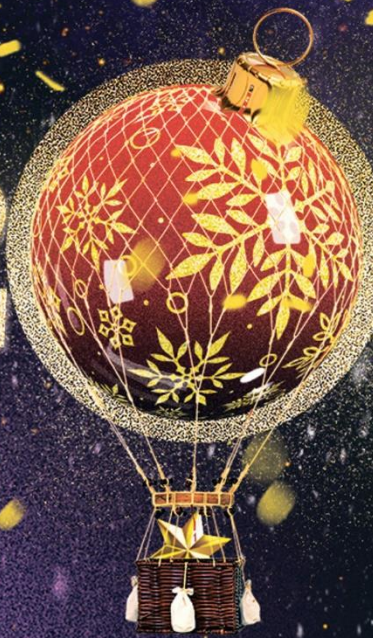
PARTY DATES: NOVEMBER – 24 & 25 | DECEMBER – 1 & 2, 8 & 9, 15 & 16, 22 & 23

ACCOMMODATION AT THE VIEW HOTEL WITH BREAKFAST INCLUDED:
SINGLE OCCUPANCY - £95.05 PER NIGHT | DOUBLE OCCUPANCY - £109 PER NIGHT
(RATES BASED ON A CLASSIC ROOM)

BOOK NOW

★ www.viewhotelfolkestone.co.uk ★ sales@thevhf.co.uk ★ 01303 252 102

2023



FESTIVE PARTY NIGHTS

STARTERS

Jerusalem Artichoke Soup
VG, DF, GF

Smoked Duck Breast Salad, with Orange & Toasted Walnuts
DF, GF

Classic Prawn Cocktail, with Mary Rose Sauce
DF, GF option available

Warm Goats Cheese, set on a bed of Beetroot Salad, finished with a Raspberry Vinaigrette
V, GF

MAINS

Traditional Roasted Kentish Turkey, served with Roast Potatoes, "Pigs in Blankets," stuffing & Seasonal Vegetables

Baked Fillet of Hake, Buttered Potato's, Tenderstem Broccoli, Tomato, Lemon and Basil Sauce
GF

Slow Braised Haunch of Venison, in a Rich Port Juice, Served with Mash Potato & Tenderstem Broccoli

Wild Mushroom Risotto, topped with Rocket & Parmesan
V, GF, VG option available

DESSERT

Mango Cheesecake served with Mango Sorbet
V

Traditional Christmas Pudding, served with Brandy Custard
V

Mix Selections of Ice-cream & Sorbets Vanilla, Strawberry, Chocolate, Mango & Lemon

**£44
PER
PERSON**

**Friday - Saturday
Dinner service**

**WELCOME
DRINK
INCLUDED**

**AVAILABLE
DINNER
SERVICE**

CHRISTMAS MENU

STARTERS

Jerusalem Artichoke Soup
VG, DF, GF

Smoked Duck Breast Salad, with Orange & Toasted Walnuts
DF, GF

Classic Prawn Cocktail, with Marie Rose Sauce
DF, GF option available

Warm Goats Cheese, set on a bed of Beetroot Salad, finished
with a Raspberry Vinaigrette
V, GF

SORBET

Lemon Sorbet

MAINS

Traditional Roasted Kentish Turkey, served with Roast Potatoes,
"Pigs in Blankets," Stuffing & Seasonal Vegetables

Roasted Rack of Lamb, served with Roast Potatoes & glazed
Green Vegetables, finished with Thyme Jus

Baked Fillet of Hake, Buttered Potatoes, Green Vegetables,
Tomato, Lemon and Basil Sauce
GF

Wild Mushroom Risotto, topped with Rocket &
Parmesan
V, GF, VG option available

DESSERT

Mango Cheesecake served with Mango Sorbet
V

Traditional Christmas Pudding served with Brandy Custard
V

A Platter of Kent & Sussex Cheeses, Onion Chutney & Mix Crackers
V

**£90.00
PER
PERSON**

**WELCOME
DRINK
INCLUDED**

**AVAILABLE
FOR LUNCH
SERVICE
ONLY - 25 DEC**

**£40 PP
KIDDIES
UNDER
12**

Half a Traditional
Roasted Kentish
Turkey, served with
Roast Potatoes, Pigs
in Blankets, Stuffing
& Seasonal
Vegetables followed
by ice-cream

£55
PER
PERSON

NYE MENU

STARTERS

SHARING - INCLUDES ALL LISTED BELOW

Beef Brisket Croquettes with Chilli, Lime & Coriander Mayo
DF

Prawn Cocktail with Marie Rose Sauce
DF, GF option available

Sweet Potato & Spinach Bon-bon served with Romesco Sauce
V, DF

Salmon Gravdax with Fennel & Green Apple Slaw
GF, DF

MAINS

CHOOSE YOUR DISH

Chicken Supreme served with Sweet Potato Purée, Tenderstem Broccoli, Thyme Jus

Slow Braised Haunch of Venison in a rich Port Jus, served with Mash Potato & Tenderstem Broccoli

Baked Fillet of Hake served with Buttered Potatoes, Green Vegetables & tomato, Lemon and Basil Sauce
GF

Wild Mushroom Risotto served with Rocket & Parmesan
V, GF, VG option available

DESSERT

SHARING - INCLUDES ALL LISTED BELOW

Dark Chocolate Brownie

Strawberry Panna Cotta

Mango Cheesecake

Price includes 3 course menu,
evening disco and glass of
bubbly at midnight

Book your table now:

01303 847 880

reservations@clifferestaurant.co.uk

www.clifferestaurantfolkestone.co.uk

The Clibbe
LOUNGE BAR & KITCHEN
EST. 2016

For package bookings including
overnight accommodation with
breakfast: 01303 252 102

frontdesk@thevhf.co.uk

www.viewhotelfolkestone.co.uk

Room rates from £233

based on 2 people sharing a
classic room.

Room upgrades available.



THE VIEW
HOTEL

FESTIVE BREAKS

It's time to enjoy a Festive Break round ours. For those perfect coastal getaways at the most wonderful time of the year! Our Festive Breaks Package gives you bigger discounts the more nights you stay! This package is designed to get you into the spirit of the Festive Season! Wine and dine with dinner included and explore Folkestone during this beautiful time of year. Wake up to a hearty full English breakfast included in the price. With its stunning shoreline and creative corners, there's no better place to spend a few days away in celebration with friends and family. Its stunning beaches are a stone's throw away from the hotel, providing a lovely setting to take a stroll and enjoy the breath-taking views across the English Channel. Situated perfectly on The Leas, the views are spectacular and there's plenty Around Us to discover.

www.viewhotelfolkestone.co.uk



TERMS & CONDITIONS

Festive Menu Bookings:

For bookings less than 8 people: Online booking is available through our website. We require credit card details by the booker to secure the booking. Any reduction in numbers or full cancellations after 7 days prior to your booking, a £15 per person cancellation fee will be applied. 'No Show' bookings will be charged at the full menu price per person. Pre-orders are required no later than 7 days prior to your event date.

For bookings of 8 or more: Please contact us at reservations@clifferestaurant.co.uk or give us a call on **01303 847 880**. We require credit card details by the booker to secure the booking. Any reduction in numbers or full cancellations after 7 days prior to your booking, a £15 per person cancellation fee will be applied. 'No Show' bookings will be charged at the full menu price per person. Pre-orders are required no later than 7 days prior to your event date.

Festive Party Bookings:

Available for 6 people or more

Please contact us at reservations@clifferestaurant.co.uk or give us a call on **01303 847 880**. We require credit card details by the booker to secure the booking. Any reduction in numbers or full cancellations after 7 days prior to your booking, a £15 per person cancellation fee will be applied. 'No Show' bookings will be charged at the full menu price per person. Pre-orders are required no later than 7 days prior to your event date.

Christmas Day Bookings

Please contact us at

reservations@clifferestaurant.co.uk or give us a call on **01303 847 880**. Pre-orders required and £25 non-refundable deposit per person. Pre-orders required no later than 14 days.

New Year's Eve Bookings

Please contact us at

reservations@clifferestaurant.co.uk or give us a call on **01303 847 880**. Pre-orders required and £25 non-refundable deposit per person. Pre-orders required no later than 14 days.



THE VIEW HOTEL

BOOK NOW

viewhotelfolkestone.co.uk | 01303 252 102
sales@thevhf.co.uk | 30 – 32 Clifton Road,
Folkestone, Kent CT20 2EF